



TRACK

LITELINE TK SERIES*



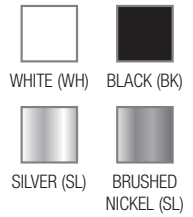
Light Residential
Single Circuit 120V
*Canadian Availability Only

TRACK LENGTHS

Field Cuttable



FINISH



A-LINE ATK SERIES



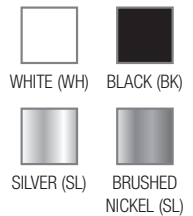
Residential / Commercial
Single 120V

TRACK LENGTHS

Field Cuttable



FINISH



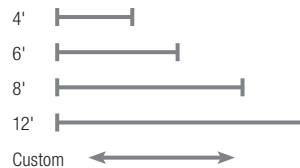
POWERGEAR



Commercial 120-277V
2 Circuit / 2 Neutral
3 Circuit / 1 Neutral

TRACK LENGTHS

Field Cuttable



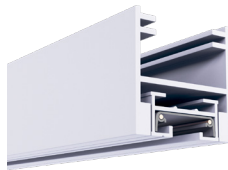
FINISH



ADD RIGIDITY

Provide strength to track with A-Beam and H-Channel. Ideal for commercial applications including retail and hospitality, these rigid lighting channels require fewer suspension points allowing for a cleaner ceiling space.

A-BEAM



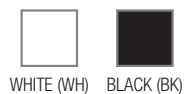
Commercial
Single / 2 Circuit 120V

TRACK LENGTHS

Not Field Cuttable



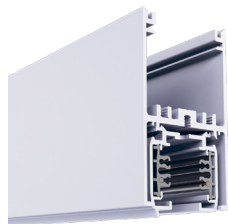
FINISH



FEATURES

- Ability to add up-lighting for design flexibility
- Suspended only

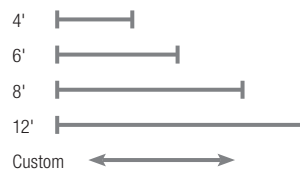
H-CHANNEL



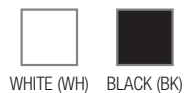
Commercial

TRACK LENGTHS

Field Cuttable



FINISH



FEATURES

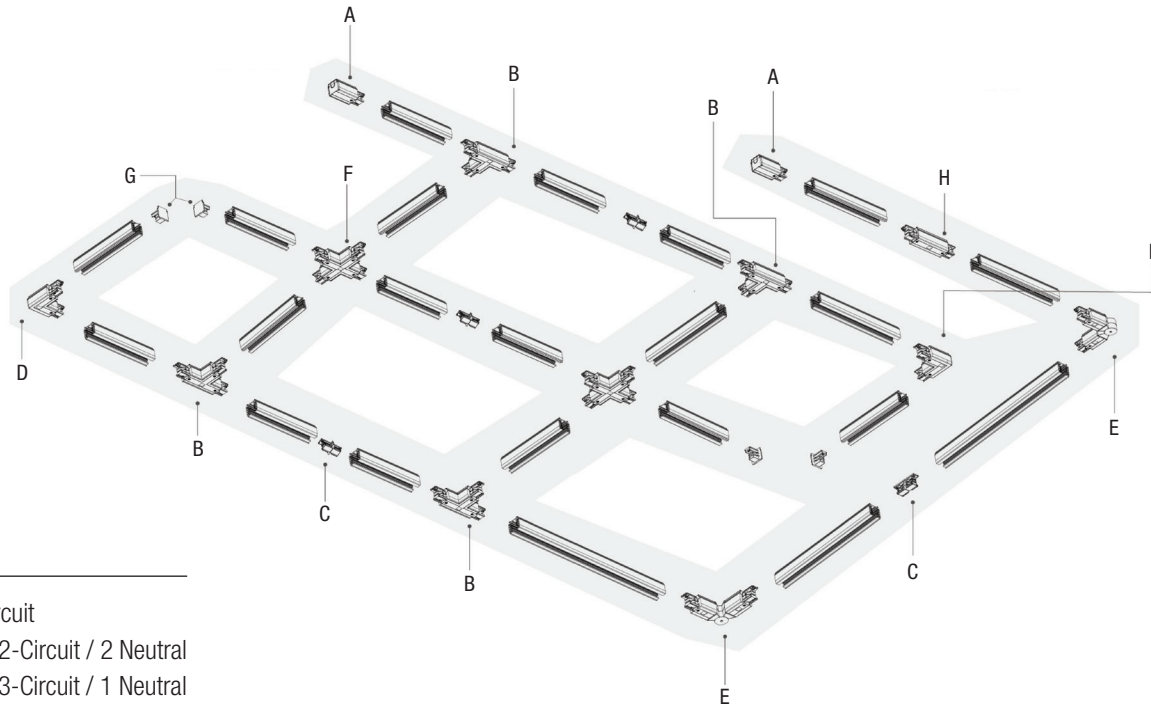
- 12 ft spacing between suspension points
- Integrate track into store fixtures in retail environment

MOUNTING



SUSPENDED SURFACE WALL BRACKET

TRACK SYSTEM DIAGRAM



GUIDE

- A-line 1-Circuit
- Powergear 2-Circuit / 2 Neutral
- Powergear 3-Circuit / 1 Neutral

	A	B	C	D	E	F	G	H	
DESCRIPTION	Live-end Connector	Live End Conduit Feed	"T" Connector	Middle Connector	"L" Connector	Flexible "L" Connector	"X" Connector	End Cap	Center Feed
LITELINE	LE6110	CA6106	TC6103	IC6101	LC6102	FC6105	XC6104	TK6000-END	FC6108
A-LINE	ATKP09	ATKP06	ATKP03	ATKC01	ATKP02	ATKC05		ATK0-ENDCAP-1C	ATKP08 ATKP02
POWERGEAR	PRO-2431(L/R)* PRO-0431(L/R)*		PRO-2436(L/R) (1/2)* PRO-0436(L/R) (1/2)*	PRO-2433 PRO-0433(A)* PRO-0433 PRO-0433(A)*	PRO-2435(L/R)* PRO-M435 PRO-0435(L/R)* PRO-M435	PRO-2439 PRO-0439	PRO-2437 PRO-0437	PRO-2432 PRO-0432	PRO-2434 PRO-0434

DESCRIPTION	Wired End	Live End with Canopy	Live End with Canopy for T-Bar	Monopoint	Hollow Stem Suspension Rod	Stem Rod Kit with Hollow Rod	Track Hook / Track Receptacle	Track Suspension Kit, 250" AC	Single circuit current limiter
LITELINE	WE6110	LE6111			LL-ATKXW	TDR62	XC6104		
A-LINE	ATKP10	ATKP11		ATKP109	ATKXW	A-TDR62	ATKA320 / ATKA321	ATKM421	ATKPCL-(09/06/11)-1C

*L, R, 1, 2 Help to define the neutral wire position. Refer to spec sheet for more details. "A" option indicates isolating power.

CUSTOMIZE CONNECTOR STYLES



A-Line
Compatible with
A-Line, Juno or Contech



Liteline
Compatible with
Liteline



H style
Compatible with Halo,
WAC or Hampton Bay



L style
Compatible
with Lightolier



C style
Compatible
with Capri



P2
2-Circuit compatible with
Powergear and Global Trac



P3
3-Circuit compatible with
Powergear and Global Trac

For other track compatibility, please contact your local rep.